



Magadansky State Nature Reserve

COMPLEX PROGRAM
OF ENVIRONMENTAL
EDUCATION ACTIVITIES
«YEAR OF THE STELLER'S SEA EAGLE»

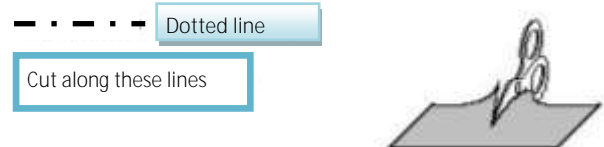
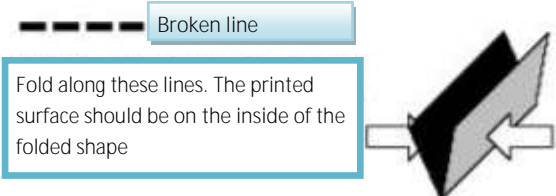
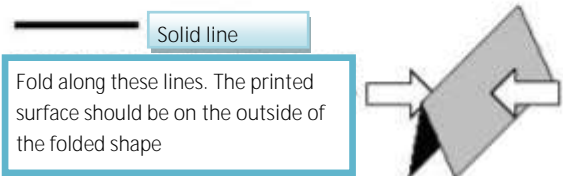


INSTRUCTIONS FOR ASSEMBLING THE MODEL FOR THE "TRAVEL OF STELLER'S SEA EAGLE ALESHA" PROJECT

Recommended Materials

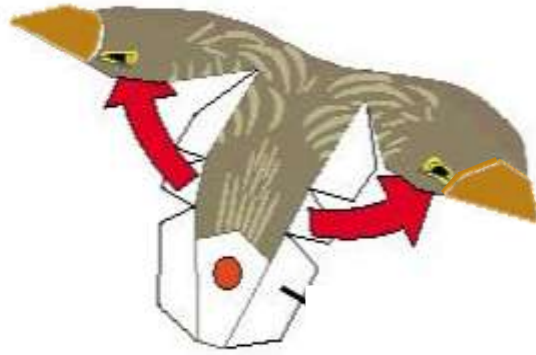
- scissors
- stationery knife
- glue (preferably liquid)
- glue brush

BASIC SYMBOLS FOR MODEL ASSEMBLY



We recommend cutting and
gluing all parts
gradually following
instructions

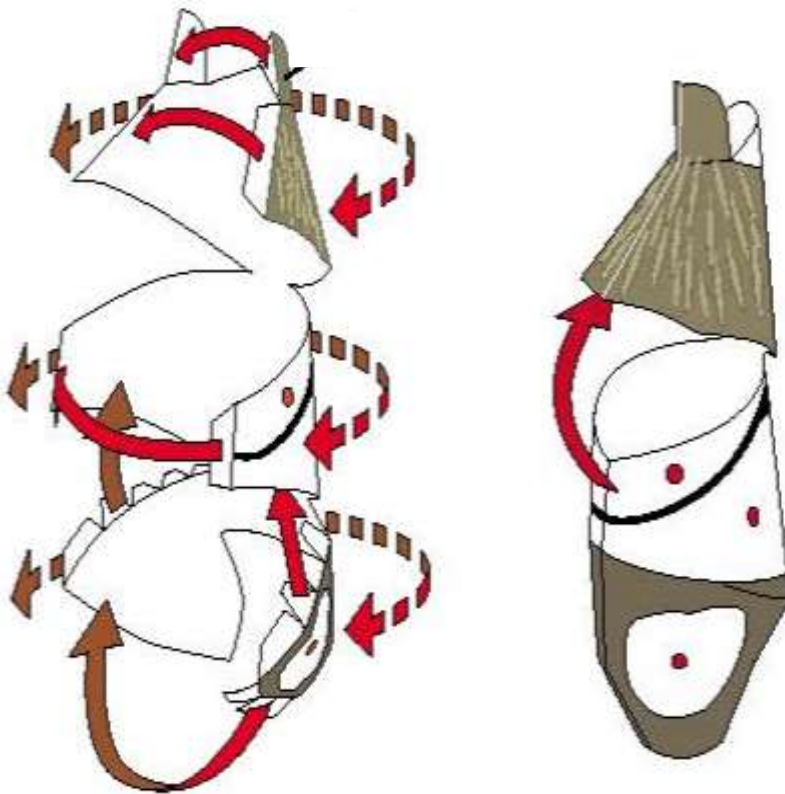
Assembly of Head



Reference photo



Assembly of Body



Reference photo

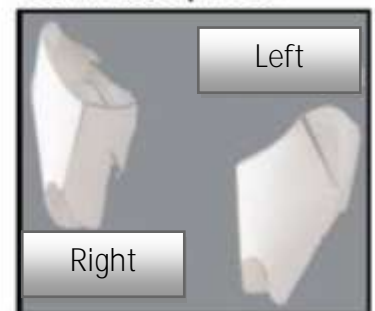


Assembly of Legs1

Fold each piece according to the assembly symbols. Repeat with the second pair.



Reference photo

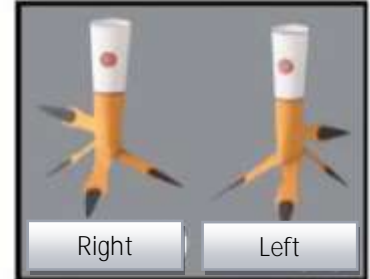


Assembly of Legs2

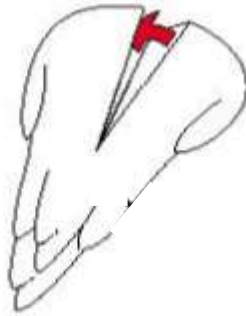
Assemble both pairs of parts according to the assembly symbols. Repeat with the second pair.



Reference photo



Assembly of Tail Feathers1



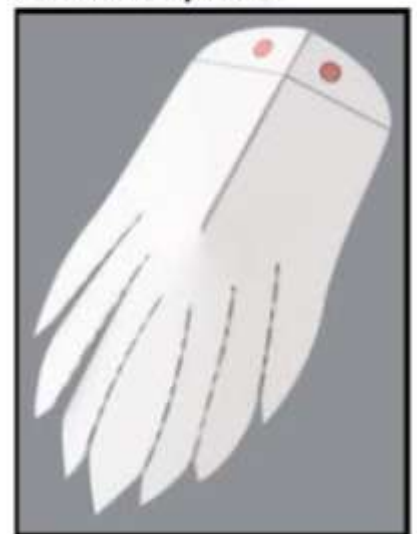
Reference photo



Assembly of Tail Feathers2



Reference photo

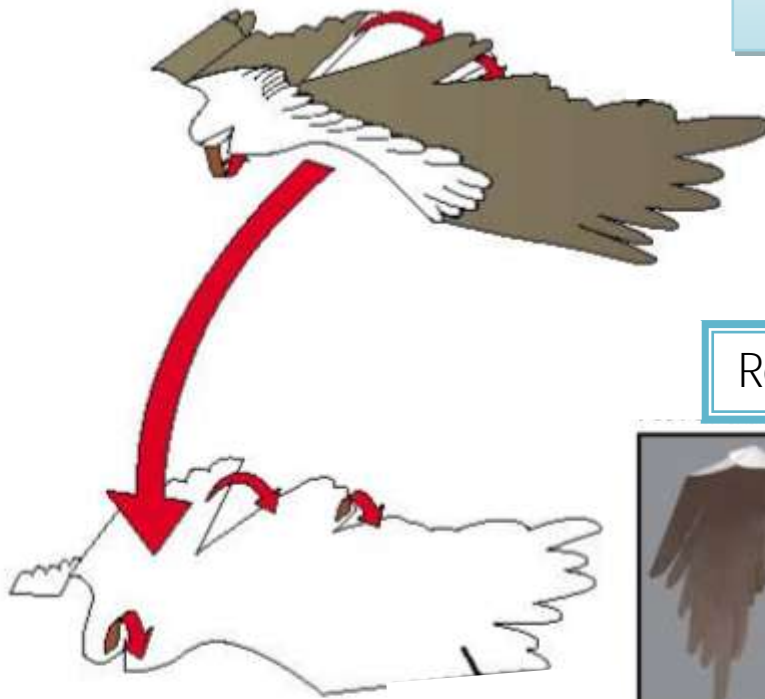


Assembly of Wings

Assemble every detail in pairs

Attention!

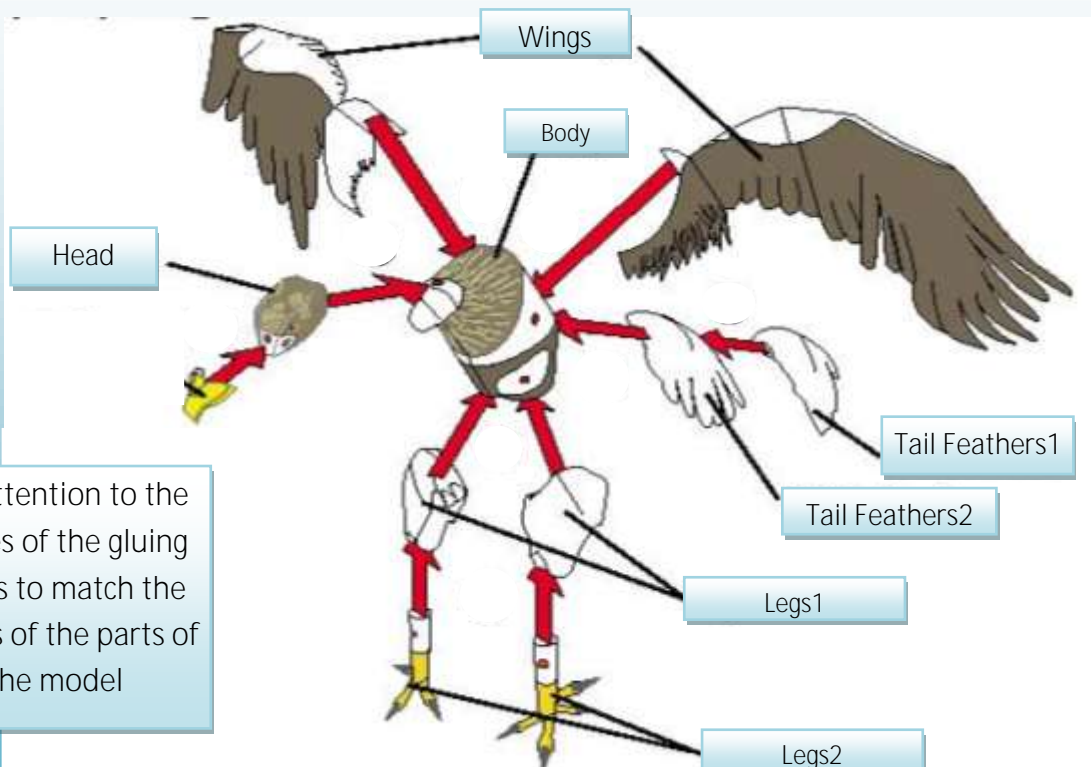
Glue both parts of the wings tightly together, bending to one side!



Reference photo

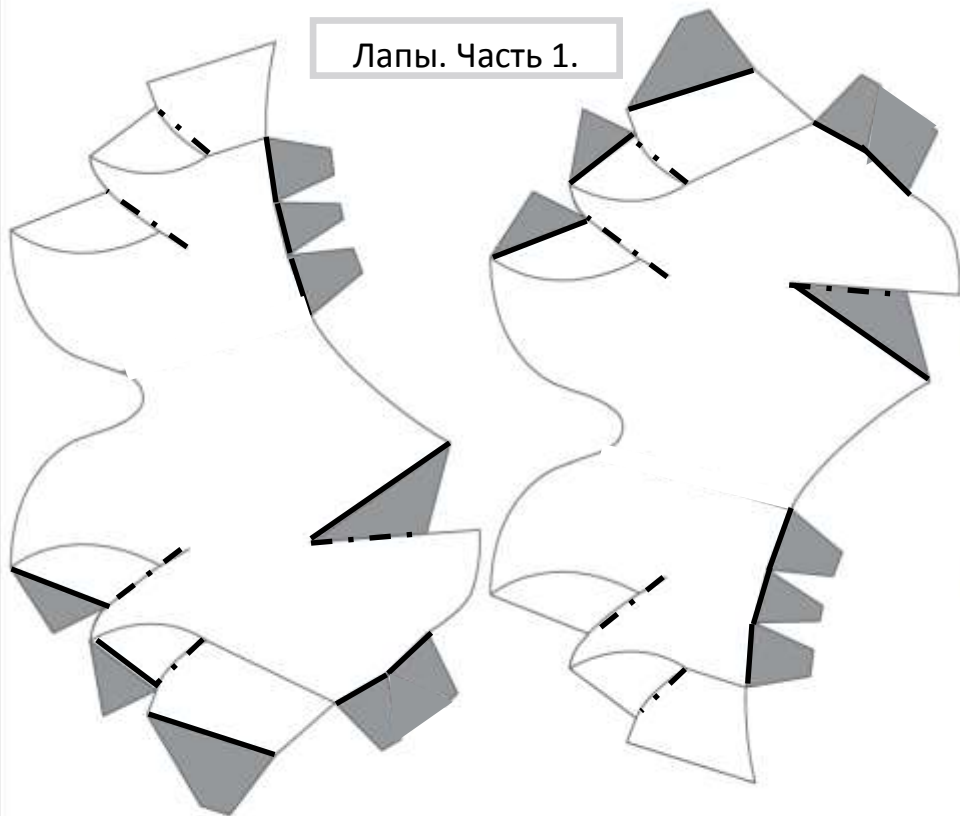


Assembly of all parts

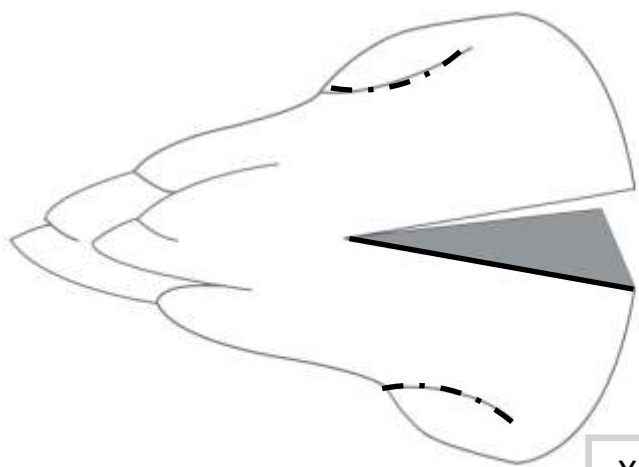
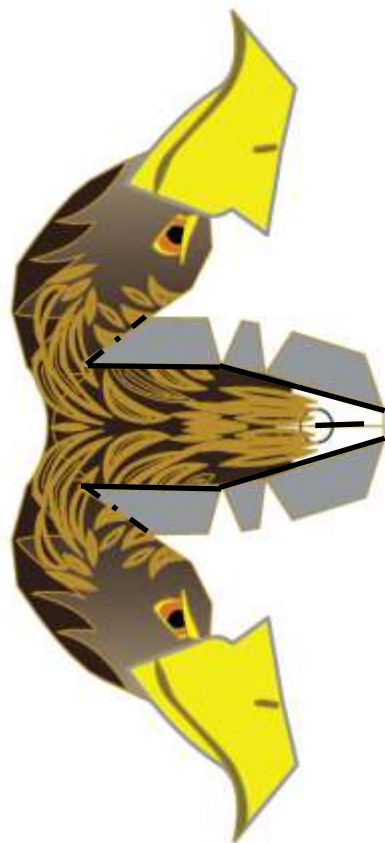


Pay attention to the shapes of the gluing points to match the shapes of the parts of the model

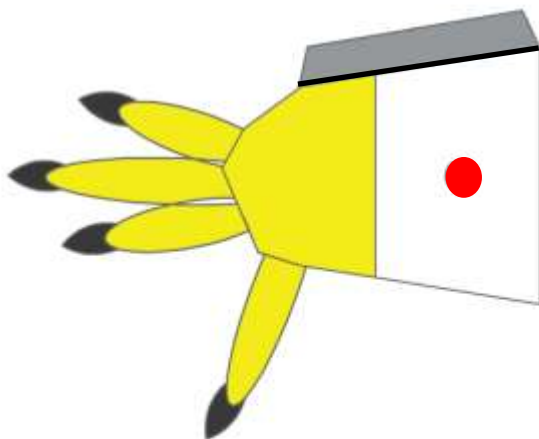
Лапы. Часть 1.



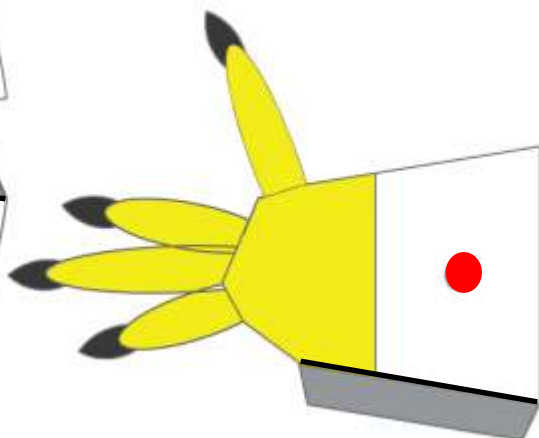
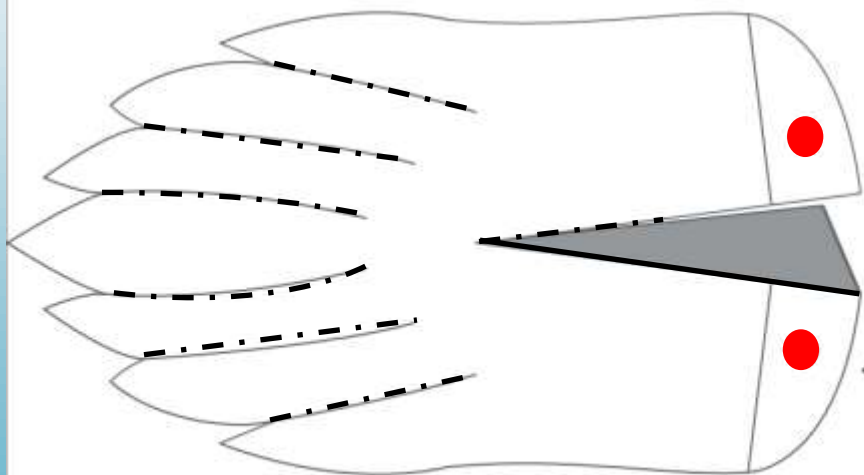
Голова

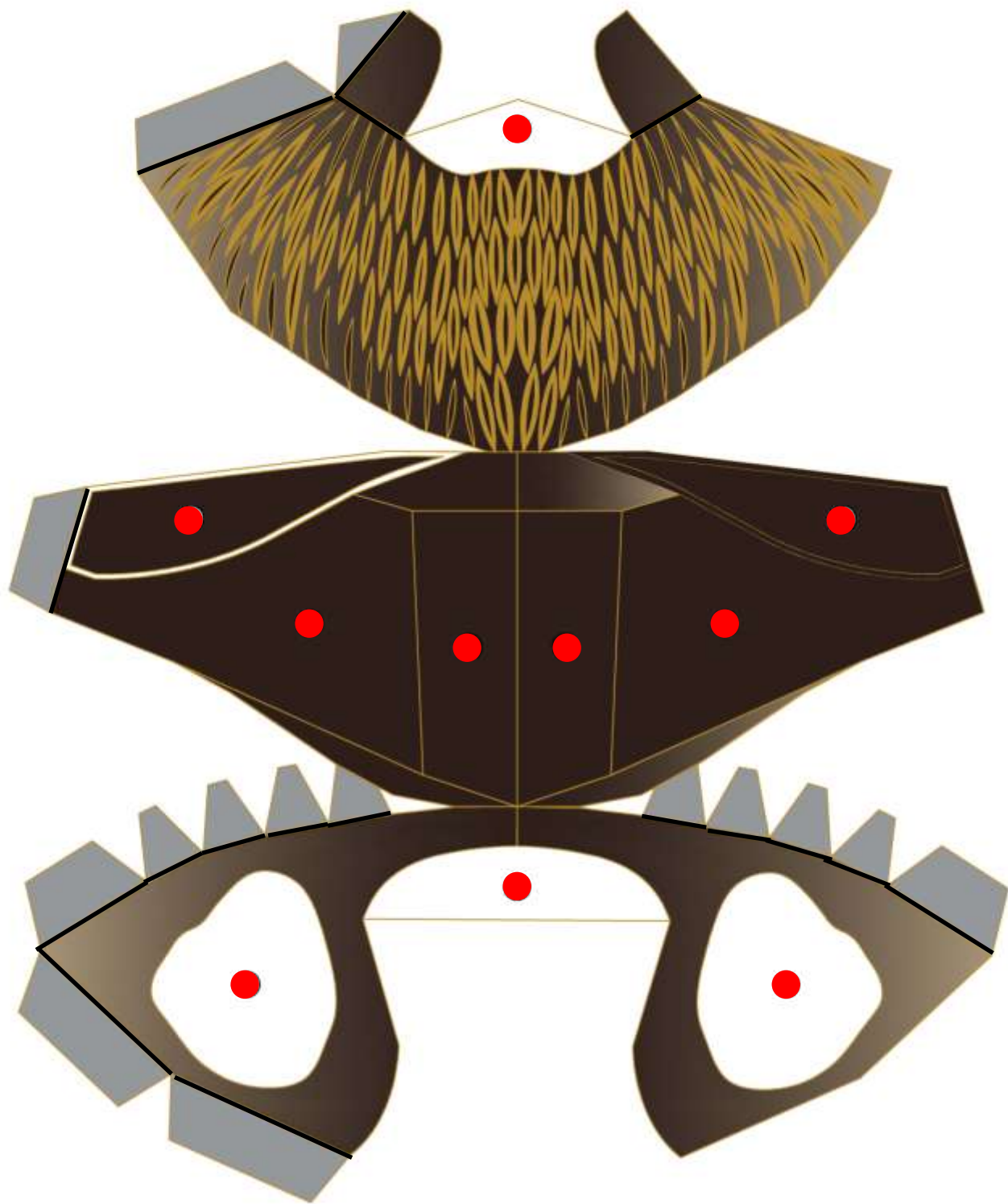


Хвост. Часть 1 и 2



Лапы. Часть 2.





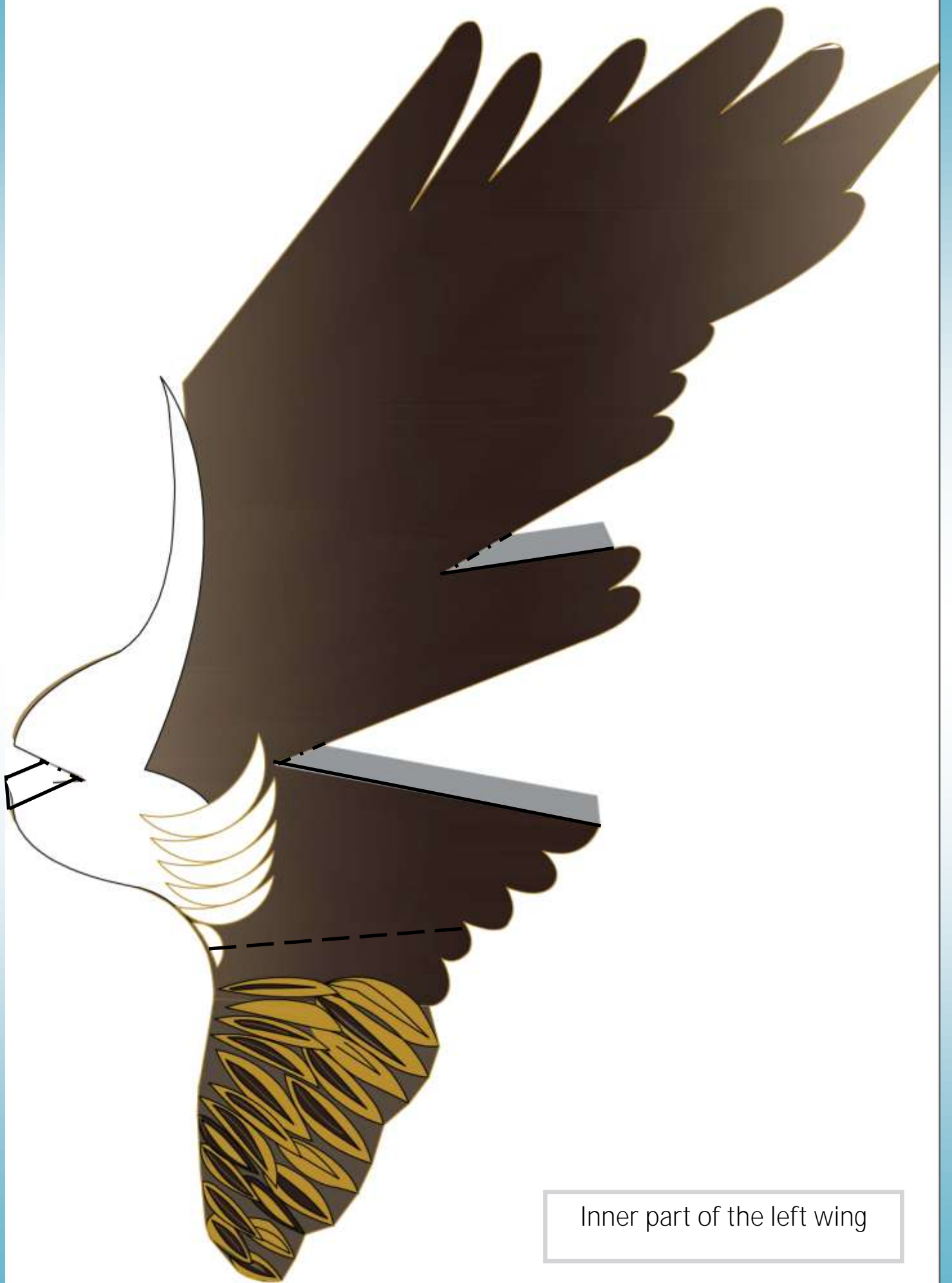
Body

Inner part of the right wing



The outer part of the right wing





Inner part of the left wing

The outer part of the left wing

